

Network Secure Gateway User guide

Works with Internet Explorer and a Windows PC (XP, Vista or Windows 7).

Safari, Chrome etc.

If you go to Moodle see below;

<https://www.lodeheathschool.co.uk/>

Then click the Secure Gateway link from the top links you can access a school computer remotely so all systems and files except PAR's and SIM's (just need encrypted app for SIM's\PAR's).

Secure Gateway link



Home Our School Parents Resources Facilities News Contact



Secure Gateway

Step 1

Click Secure Gateway on the Lode Heath School website



**Lode Heath School
Network Secure Gateway**

Username:

Password:

Sign In

Enter your network username

Enter your network password

The Secure Gateway now works with I pads, Mac's and Android devices you just need to download the RDP Client. When you login for the first time you login with one of these devices you can download the RDP client from the link at the bottom of the page.

Click Allow

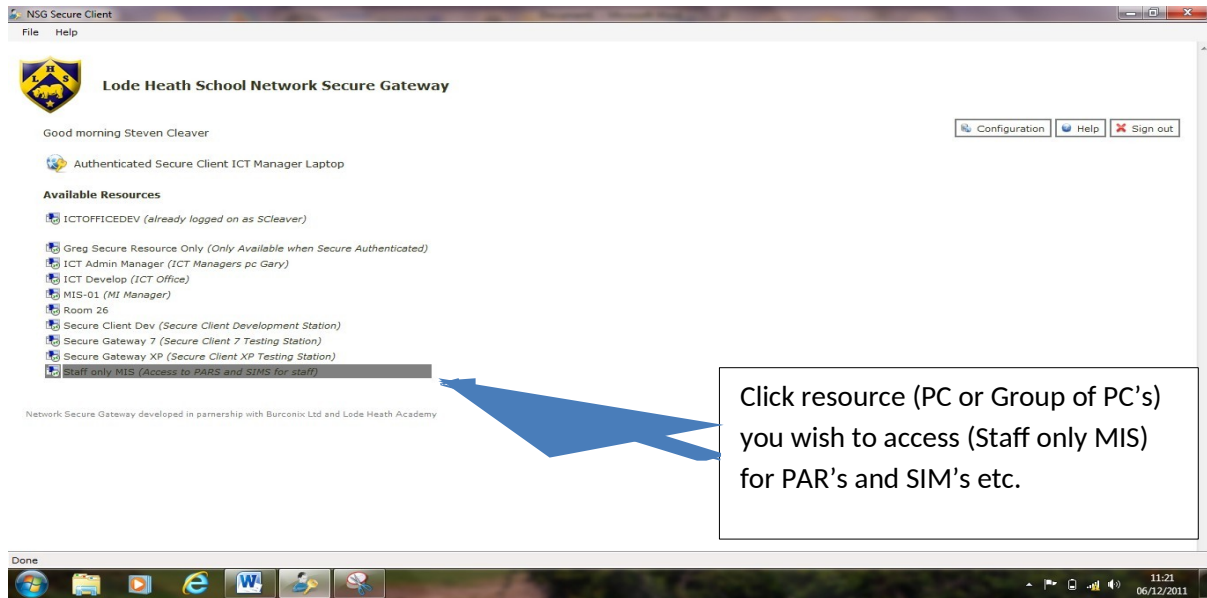
Important:

If you get the message below when you logon the first time make sure you click allow.



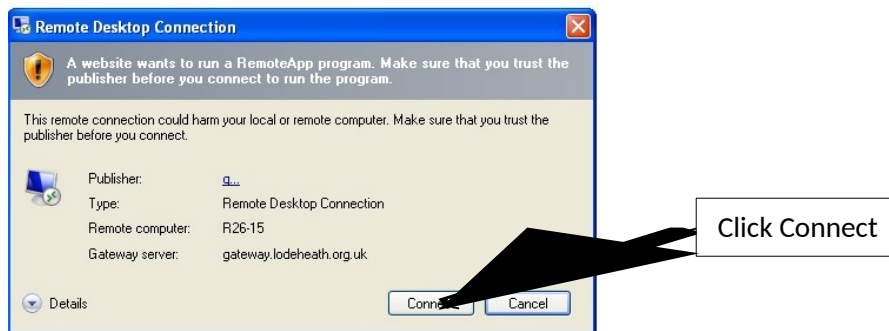
Step 2

Click the Agree button you are then taken to a page that displays the resources (PC'S) you have access too then click on a resource you wish to access, see below;



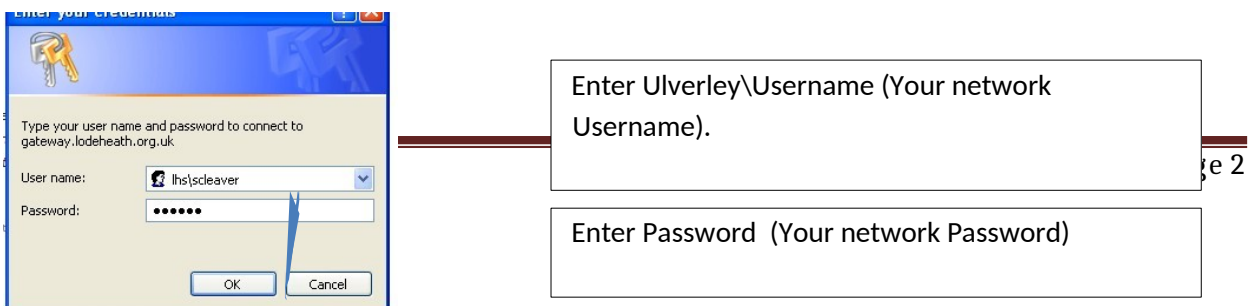
Step 4

Once you click the resource you will get the screen below;



Step 5

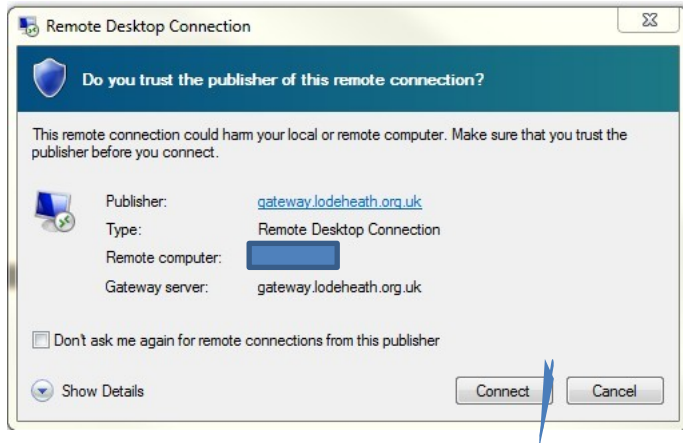
You may get the box below if you are using Windows 7 or using Windows XP you need to enter your Domain name\ Network Username and Password (see below).





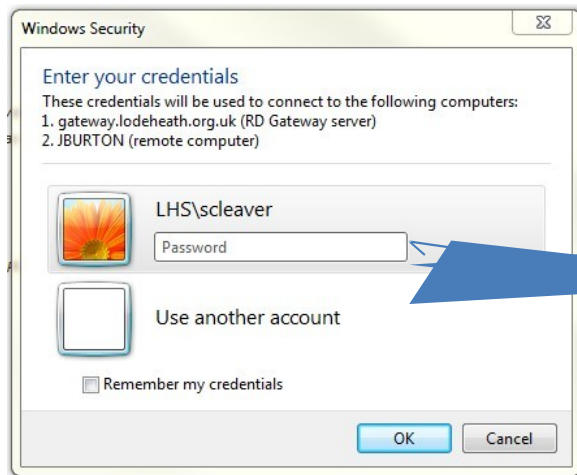
If you get the below instead instead of the above click Open.

Click Open



Then Click Connect

Step 6



Just enter your Network Password.

Step 7

You should then login to the Network if you get the standard windows login screen just enter your network username and password again.

You should then be able to use the PC and all applications and resources the same as if you are in school the same as you.

Using Chrome instead of Internet Explorer

The downloads at the bottom.

Good morning Steven Cleaver

Available Resources

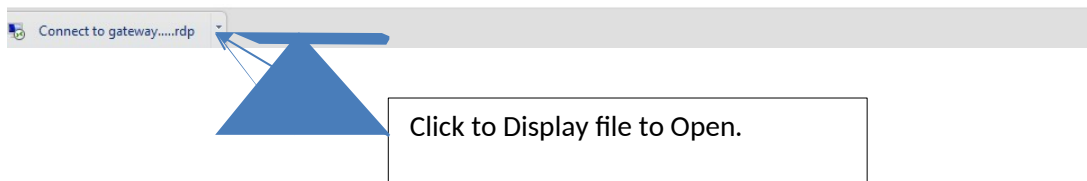
-  GARY (already logged on as SCleaver)
-  ICT-OFFICE01 (already logged on as SCleaver)

-  ICT Admin Manager (ICT Manager PC Gary)
-  ICT-Office1 (ICT Admin Manager)
-  J.Burton (Heads Machine)
-  L.Kemp
-  MIS-01 (MIS Consultant)
-  PAs Machine
-  Sally Summers
-  ST-Office (ST-Office STonks)
-  Windows 7 Test
-  Windows 7 Virtual Stations

Your Browser does not support the RDP ActiveX Control. You will be prompted to download a connection file which you will need to run/double click to connect to the gateway. You will need to repeat this process each time you connect.

Alternativly you can use Microsoft Internet Explorer for an optimised gateway experience.

Network Secure Gateway was developed in partnership between Burconix Ltd and Lode Heath Academy
Licenced to Lode Heath Academy - NSGWeb Build v0.0.0.3 - February 2012



Here are the remote desktop links for Apple and Android phone users:

Apple:

<https://apps.apple.com/gb/app/microsoft-remote-desktop/id714464092>

Android:

https://play.google.com/store/apps/details?id=com.microsoft.rdc.android&hl=en_US