



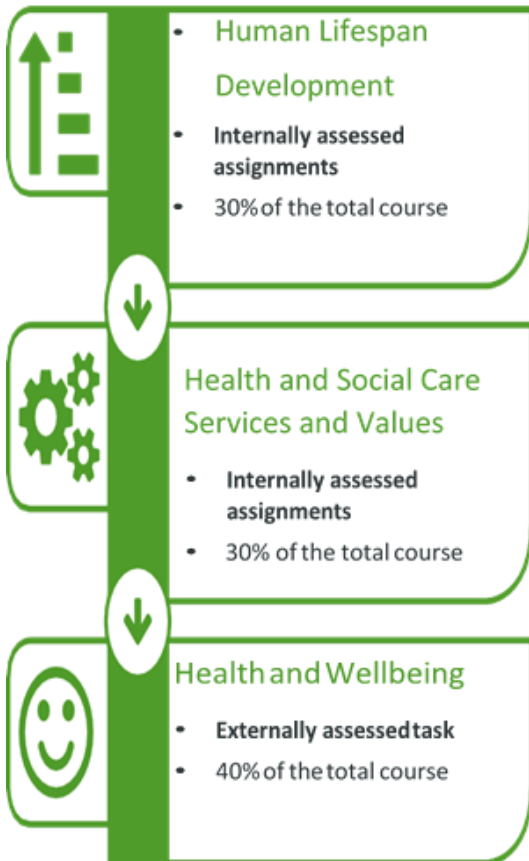
# LODE HEATH PHYSICAL EDUCATION DEPARTMENT



## BTEC Health and Social Care

### What does it consist of?

The course is made up of **three components**: two internally assessed and one that's externally assessed.



### What content will this course cover?

Component 1, Human Lifespan and development. To achieve this your students will:

- Explore how individuals develop physically, emotionally, socially and intellectually overtime
- Investigate how various factors, events and choices impact individuals' growth and development.
- Discover how people adapt to life events and cope with making changes.

Component 2 – Health and social care services and values.

- Learn which health and social care services are available.  
Identify why people might need to use services.



# LODE HEATH PHYSICAL EDUCATION DEPARTMENT



## BTEC Health and Social Care

### What content will this course cover?

- Discover who's involved in providing these services.
- Explore what might stop people from accessing the services they need.
- Look at the care values the sector has to make sure people get the care and protection they need.

### Component 3 – health and wellbeing (externally assessed). To achieve this aim students will:

- Learn what 'being healthy' means to different people.
- Explore the different factors that might influence health and wellbeing.
- Identify key health indicators and how to interpret them.
- Assess an individual's health using what they've learned.

**Specification Link** - [btec-tech-award-in-health-and-social-care-guide.pdf \(pearson.com\)](https://www.pearson.com/uk/qualifications/btec/technical-awards-in-health-and-social-care/guide)

### Recommendations

- Students must have an interest in the health and social care sector

It is an ideal course for anyone considering a career in the following: care assistant, healthcare worker, nursery worker, social services, nurse, midwife